

State of Wyoming Corner Record

(In compliance with the **CORNER PERPETUATION AND FILING ACT**, Wyoming Statutes, 1997 Section 33-29-140 et. seq., and the Rules and Regulations of the Board of Professional Engineers and Professional Land Surveyors)

Reverse side of this form may be used if more space is needed.

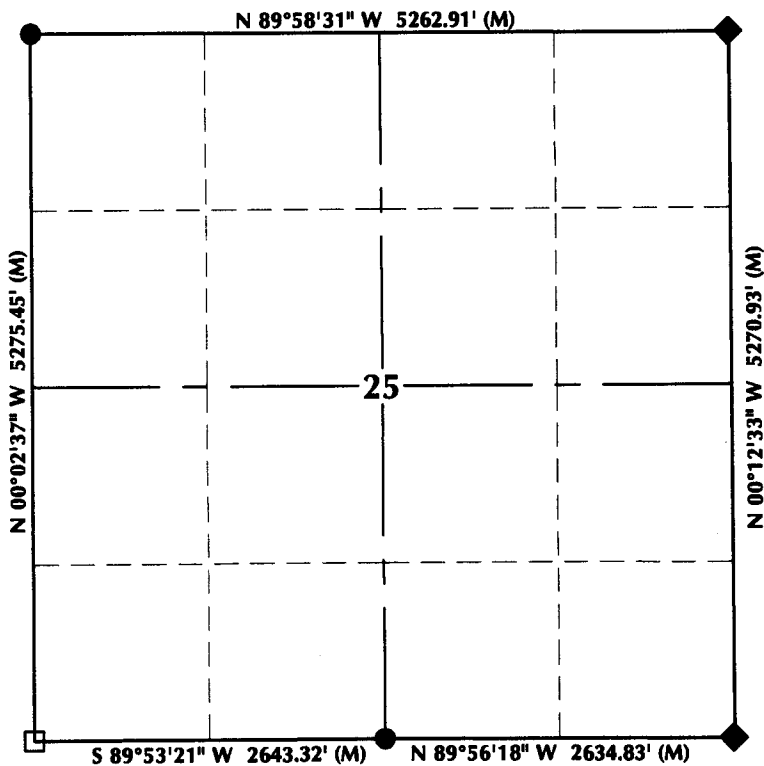
Record of original survey and citation of source of historical information (if corner is lost or obliterated). Description of corner monumentation evidence found and/or monument and accessories established to perpetuate the location of this corner. Sketch of relative location of monument, accessories, and reference points with course and distance to adjacent corner(s) (if determined in this survey). Method and rationale for reestablishment of lost or obliterated corner.

ORIGINAL RECORD: Set limestone 24"x10"x5" for cor. Secs. 24, 25, 19 & 30.

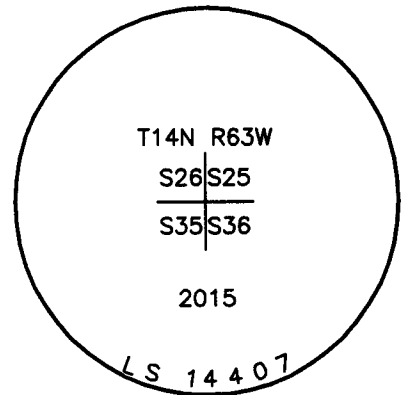
FOUND: Aluminum cap LS 6098 and P.K. nail in fence 25.66' to the S00°16'50"E, did not hold.

SET: Set an aluminum cap LS 14407 based on a stone found by Western Land Services on "STATE 14-63-36-1H" well plat. Did not find the stone and did not hold the corner set by LS #6098 since it was set by double proportionate measure and there is enough evidence to conclude that the corner was not lost, but was obliterated. The stone fits the fence that is along the North line of Section 36, which the North 1/4 and Northeast corners of Section 36 fall on, and the section line to the South goes through a fence post.

Monument Location



Monument Inscription



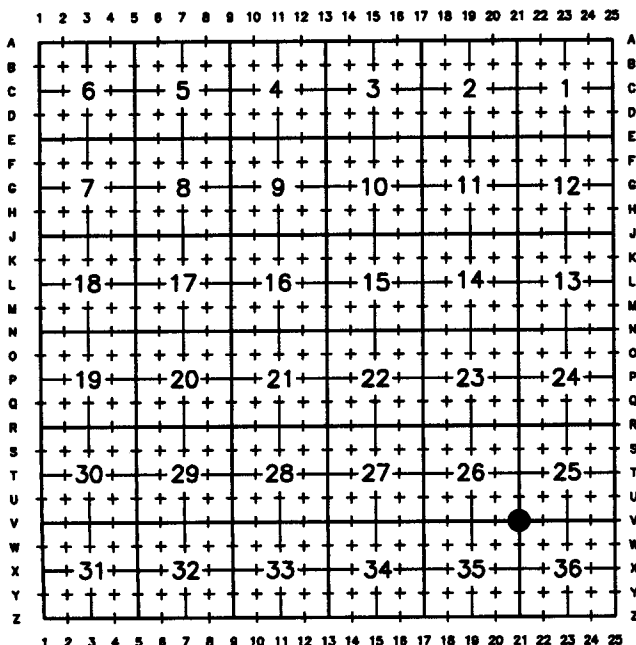
NOTES:

1. ▲ INDICATES FOUND BLM BRASS CAP
2. ■ INDICATES FOUND STONE
3. ● INDICATES FOUND ALUMINUM CAP
4. ◆ INDICATES SET ALUMINUM CAP
5. □ INDICATES SECTION CORNER PER CORNER RECORD
6. BASIS OF BEARING DERIVED FROM WYOMING COORDINATE SYSTEM NAD83 EAST ZONE
7. ALL MEASURED DISTANCES ARE GRID COMBINED SCALE FACTOR: .99972938
8. DRAWING NOT TO SCALE

Date of Field Work: 5/14/15

Office Reference: 14-49

Cross Index Plat



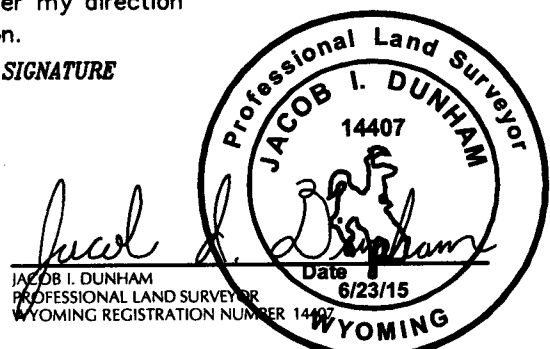
Land Surveyor/Firm/Address

609 Consulting, LLC
1095 Saberton Avenue
Sheridan, WY 82801

Telephone Number: 307-674-0609

This corner record was prepared by me or under my direction and supervision.

SEAL & SIGNATURE



Corner Name: Southwest Corner Section 25, T14N, R63W, 6th P.M. County: Laramie Wyoming

Cross-Index No.: V-21

SBRPEPLS/PLSW: March 1994; PLSW January 1998

RECP #: 664164
 RECORDED 6/29/2015 AT 1:14 PM BK# 2451 PG# 1546
 Debra K. Lathrop, CLERK OF LARAMIE COUNTY, WY PAGE 1 OF 1